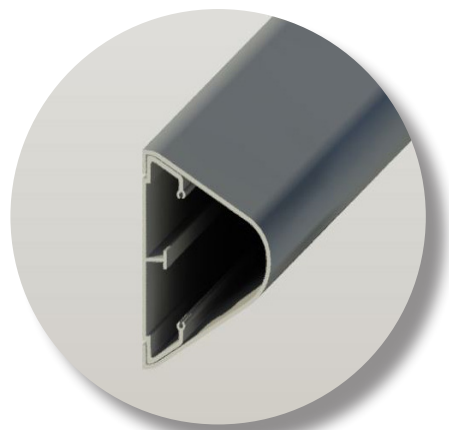


D100

Platinum Dome Rail - 100h

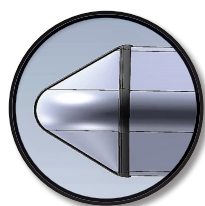
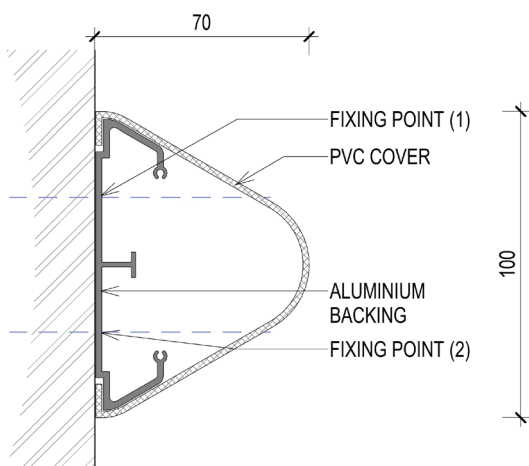


The Platinum Wall Dome Rail combines a aluminium retainer with a PVC cover providing high performance, impact and abrasion resistance for buildings where durability and impact resistance are important. The Dome Rail is best used for a base or bottom wall protection and also for bed locator or bed head wall protector.

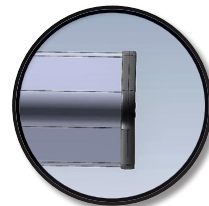
The D100 is a modular system constructed of a heavy gauge aluminium retainer, a PVC covering, PVC accessories including end-caps, outside corners and joining strips for applications exceeding 3m lengths.

FEATURES

Height	100mm
Length	3m
Depth	75mm
Cover	PVC
Retainer	Aluminium
Fixing	Double Mechanical Fixing
Accessories	End-cap, 90° Corners, Joining strip

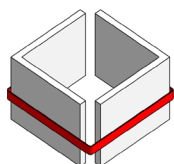


Corner & End-cap



Joining Strip

- 2mm thick PVC cover
- 1.8mm thick aluminium retainer
- Standard and custom colour available
- Smooth finish promotes minimal bacterial growth and makes it easy to clean
- Easy & fast installation



Platinum
Wall Protection

Geoff Pratt - 082 458 6054 - geoff@wallprotection.co.za
Karin Meiring - 082 339 3134 - karin@wallprotection.co.za
www.wallprotection.co.za