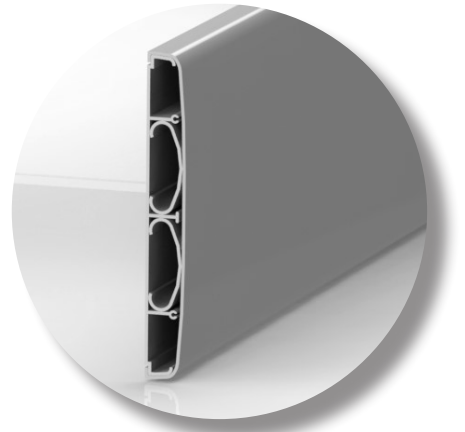


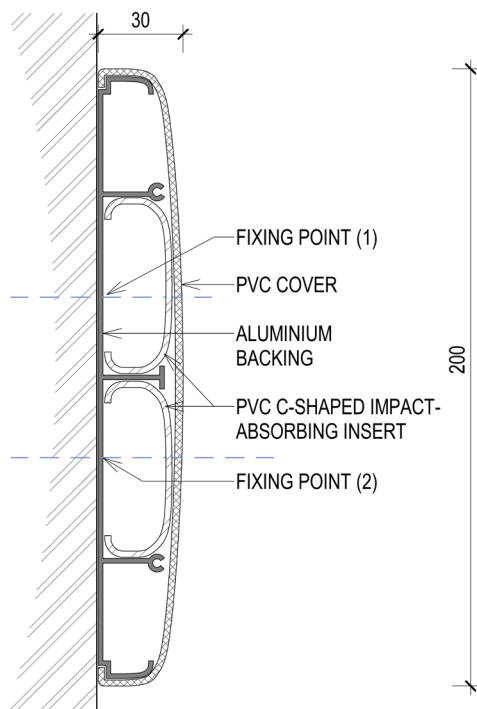
P200

Platinum Wall Rail - 200h



Our Wall Guard / Crash Rails are designed to provide high impact resistance, and to protect the wall in high traffic areas where wall damage will be caused by rolling equipment such as wheelchairs, beds, utility carts, and trolleys.

Our Wall Guard / Crash Rails is a modular system constructed of a heavy gauge aluminium retainer; a PVC covering; PVC accessories including returns and joining strips for applications exceeding 3m lengths. The P200 wall rail comes with a double C-shaped PVC insert for extra strength and impact absorption.



FEATURES

Height	200mm
Length	3m
Depth	30mm
Cover	PVC
Retainer	Aluminium
Fixing	Double Mechanical Fixing
Accessories	End-cap, 90° Corners, Joining strip

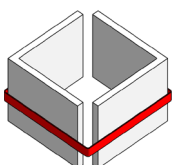


End-cap & Corner



Joining Strip

- x2 PVC inserts added for extra strength & absorption of impact
- 2mm thick PVC cover on 1.8mm thick aluminium retainer
- Double fixing points
- Standard and custom colour available
- Smooth finish promotes minimal bacterial growth and makes it easy to clean
- Easy & fast installation



Platinum
Wall Protection

Geoff Pratt - 082 458 6054 - geoff@wallprotection.co.za
Karin Meiring - 082 339 3134 - karin@wallprotection.co.za
www.wallprotection.co.za